

7.1.1 Measures initiated by the Institution for the promotion of gender equity during the year



VIJAYANAGARA SRI KRISHNADEVARAYA UNIVERSITY
"Jnana Sagara" Campus, VinayakaNagara, Cantonment, BALLARI - 583105
Department of Research and Studies in Women's Study



Coordinator

womensstudies@vskub.ac.in

1. Measures initiated by the Institution for the promotion of gender equity during the year.

Highlight the curricular and co- and extra-curricular activities promoting gender equity and sensitization and the facilities available for women on campus (within a maximum of 200 words).

The institution has initiated several measures in gender equity & sensitization in curricular can be seen from the courses introduced by the institution. For example, the Department of Women's Studies Program is based on Gender equity; department of sociology offers Gender and Society, the Department of English offers Gender studies, Department of Law offers Human rights, Department of Zoology offers Biology Reproduction and Department of Kannada offers Studies of Women literature, Department of Physical education Focus Gender Characteristics (Under the course of Foundation of Physical educational).

The institution constituted the following committee as per norms laid by University/UGC: Internal complaints committee, Women cell, Student welfare board, Institution Grievance Redressal Committee, Anti-Ragging, Sexual harassment prevention cell, Students' Disciplinary Committee, Women Welfare & SC /ST Students Welfare Committee, Day care cares for the well-being of students and staff in the institution The functions of these committees are displayed on the website of the institution and information is being disseminated to the students through orientation and induction programs.

The institution provides safety and security facilities for the staffs and students such as CCTV Surveillance and security arrangement. Students wear ID cards at all times and outsiders are checked by security staff before allotting visitor IDs. The institution has a dedicated Counselling Centre and good mentoring system for the students to take care of their academic, emotional, social and cognitive development. Personal Counselling is provided to the students at different levels. There are separate washroom facilities for girls and boys. Women's Hostels are provided with sanitary napkin pad inclinators machine for the safe and hygienic disposal of sanitary napkins.

Provide the weblink to:

- Annual gender sensitization action plan(s)
- Specific facilities provided for women in terms of:
 - a. Safety and security
 - b. Counseling
 - c. Common rooms
 - d. Daycare Centre
 - e. Any other relevant information

C 8 7

The institution has initiated several measures in gender equity & sensitization in curricular can be seen from the courses introduced by the institution. For example, the Department of Women's Studies Program is based on Gender equity; department of sociology offers Gender and Society, the Department of English offers Gender studies, Department of Law offers Human rights, Department of Zoology offers Biology Reproduction and Department of Kannada offers Studies of Women literature, Department of Physical education Focus Gender Characteristics (Under the course of Foundation of Physical educational).

The institution constituted the following committee as per norms laid by University/UGC: Internal complaints committee, Women cell, Student welfare board, Institution Grievance Redressal Committee, Anti-Ragging, Sexual harassment prevention cell, Students' Disciplinary Committee, Women Welfare & SC /ST Students Welfare Committee, Day care cares for the well-being of students and staff in the institution. The functions of these committees are displayed on the website of the institution and information is being disseminated to the students through orientation and induction programs.

The institution provides safety and security facilities for the staffs and students such as CCTV Surveillance and security arrangement. Students wear ID cards at all times and outsiders are checked by security staff before allotting visitor IDs. The institution has a dedicated Counselling Centre and good mentoring system for the students to take care of their academic, emotional, social and cognitive development. Personal Counselling is provided to the students at different levels. There are separate washroom facilities for girls and boys. Women's Hostels are provided with sanitary napkin pad inclinators machine for the safe and hygienic disposal of sanitary napkins.

b] Provide the weblink to:

- Annual gender sensitization action plan(s).
- Specific facilities provided for women (a - e).

Day Care Centre Report

Coordinator: Dr. Neelophar

Year of Establishment: 2021

The Day Care Centre at Vijayanagara Sri Krishana Devaraya University was established under the UGC scheme for providing child care centres in the universities and college during the X Plan period. The centre is managed by the Management Committee constituted by the university authority under nodal supervision of UGC of the university. The main objective of the centre or scheme is to provide day care facilities to the children of age group of three months to six years of the working parents of the university.

Number of children Admitted in 2020-21

Requirement for Admission in the Centre:

1. Birth certificate of the child/children.
2. Medical fitness certificate.
3. Salary statement of the parent.
4. Two copies of passport size photos.

Infrastructural facilities:

The Day Care Centre is running with a number of equipment's and play toys that have been procured during the previous year. During the reference period a computer table with six chairs were provided by the University administration for the supervisor's office. At present the centre is equipped with all necessary infrastructures and play toys for cognitive and physical development of the children.

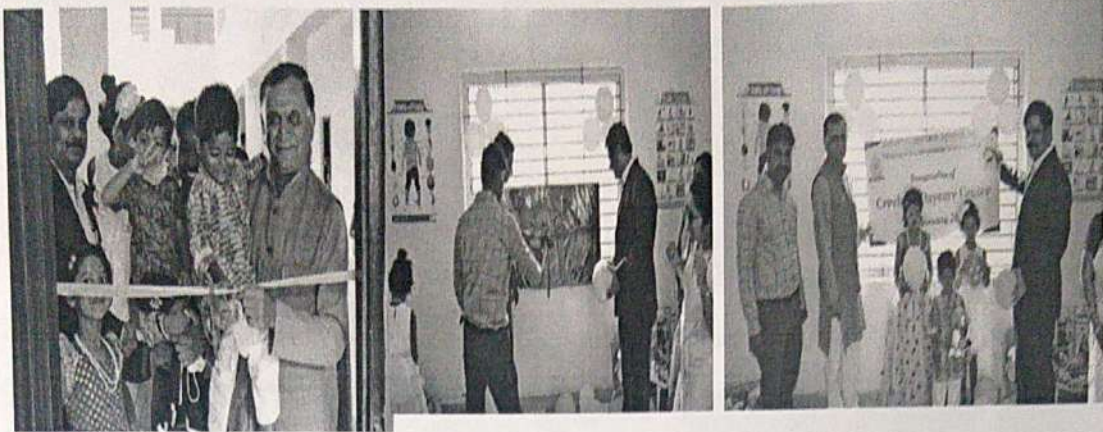
Management-Committee:

The management of the day care centre is vested upon the committee constituted by the University authority with the members from parents, faculty members and university administrative officers.

Timings of the Centre:

Sl. No.	Activities	Time
1	Arrival of Aya's	9.30 am
2	Arrival and receiving of the children	9.45 am
3	Learning Activities	9.50 am to 11.20
4	Distribution of Fruits	11.25 am
5	Playing Indoor Games	11.45 to 12.55
4	Lunch	1.00 noon
5	Sleeping	1.45 pm – 3.00 pm
6	Distribution of Snacks	3.30 to 4.00
7	Playing Outdoor Games	Up to 5.15 pm
8	Disperse	5.30 pm

Kids activity in Day-Care Centre



Day-care Centre inauguration





Kids Indore games playing



Kids Learning Activity



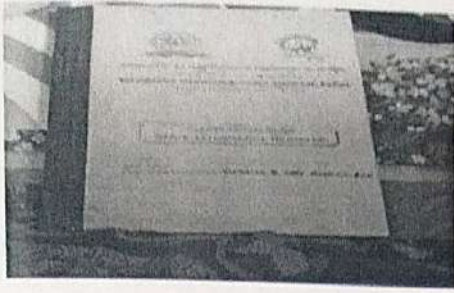
Kids Outdoor Games Playing



Kids with Parents and Day care Coordinator



Kids Learning with Aya in Day Care Centre



Attendance Book



Playing kids on Slide



Holi Celebration

Shilpa

Co-ordinator

Department of Women Studies
Vijayanagara Sri Krishnadevaraya University
Inanasagara Campus, Vinayakanagara
Cantonment, BALLARI - 583 105

Kids activity in Day-Care Centre



Day-care Centre inauguration





Kids Indore games playing

Kids Learning Activity



Kids Outdoor Games Playing



Kids with Parents and Day care Coordinator



Kids Learning with Aya in Day Care Centre

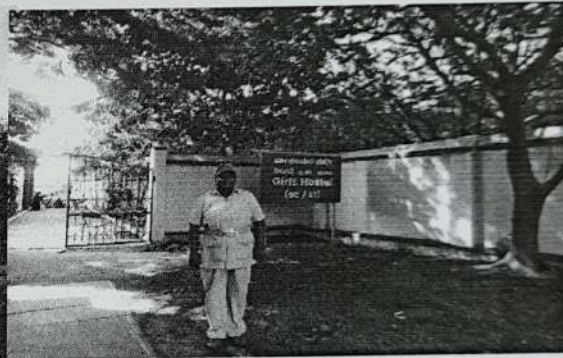
Safety and Security

Safety and Security of Women the security of the Women in the campus is strictly monitored by deployment of security persons. Specifically, in Ladies Hostel (P.G Girls General Hostel, old P.G Girls SC and ST Hostel and the Working Women's Hostel) is maintained by deployment of female guards round the clock in all the hostels. Males are not allowed in the hostel, however whenever there is a requirement for maintenance, supply and others due permission is obtained from the respective Hostel Superintendent's/Matron and during such visits female guards accompany the workers (Male). Visiting parents/relatives of the boarders are allowed to the reception of the respective hostels after due approval from the Hostel administration.

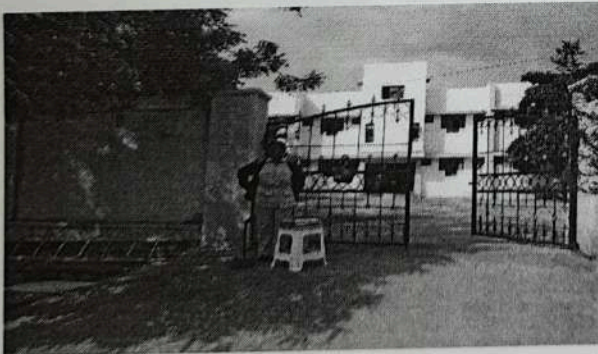
An entry/exit and Attendance register is maintained in all the hostels where all entry/exits are recorded. Outside the Hostel boundary male guards are deployed during night to restrict the movement of indeed male towards the hostels.



Working Women Hostel



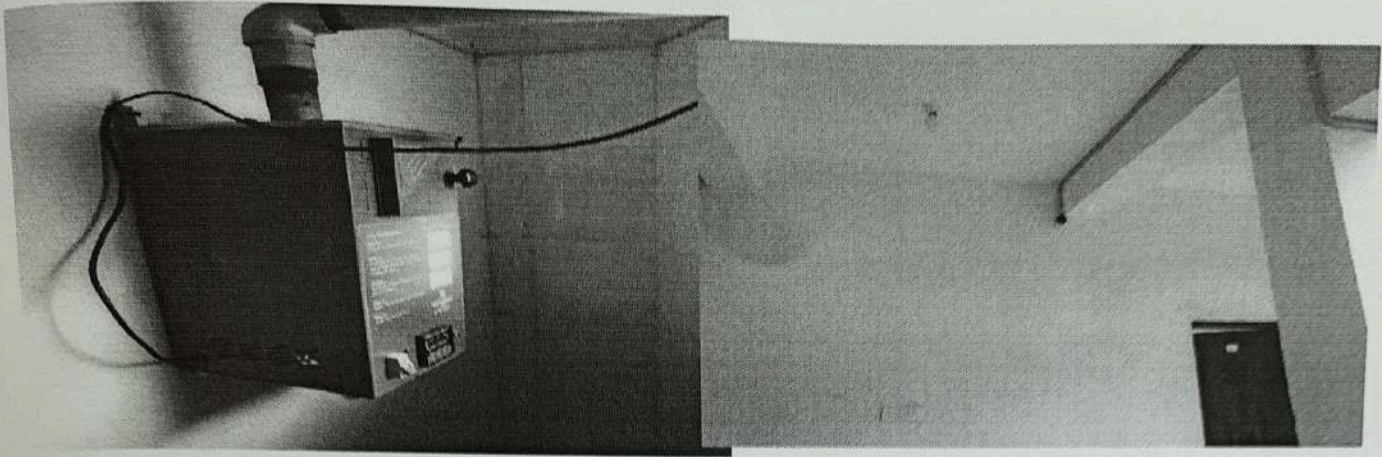
SC and ST Hostel (Old)



General Hostel (Girls)

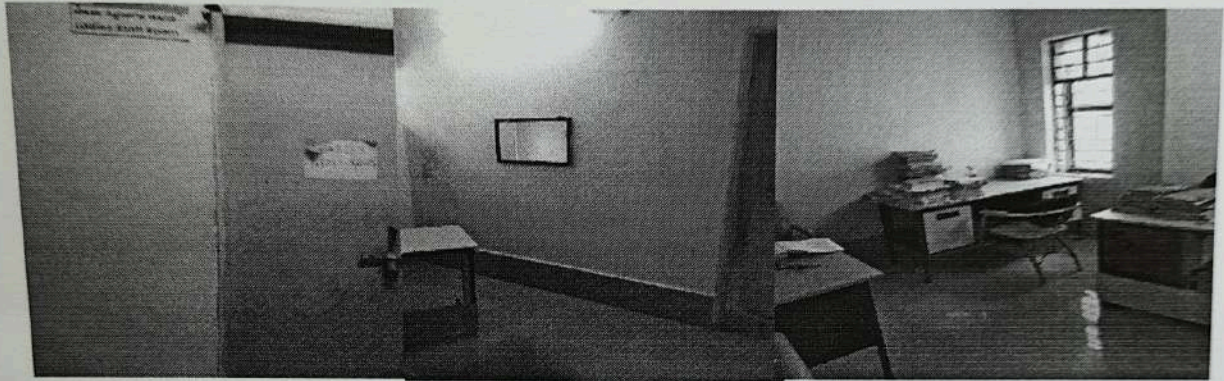


SC and ST Hostel (New)

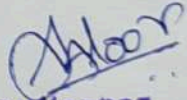


Pad Insinator machine

CCTV Camera



Ladies Staff Room


Co-ordinator
Department of Women Studies
Vijayanagara Sri Krishnadevaraya University
Inanasagara Campus, Vinayakanagara
Cantonment, BALLARI - 583 105



Working Women Hostel



SC and ST Hostel (Old)



General Hostel (Girls)



SC and ST Hostel (New)



Pad Insinator machine



CCTV Camera



Ladies Staff Room